

FY 16-17 Board of Directors

Co-Presidents

Mary Griffith -Alfarano
Dr. Colleen Lelli

Vice Presidents

Lisa Altomare
Sonja Haggert

Treasurer

Karianne Tomosky, CPA

Secretary

Alice Blenner

At Large

Alec M. O'Neill, Esq.

Jacqueline Allen
Penny Satell Berman
Karen Christiansen,
MBA, CMA

Colleen Coonelly, Esq.
Ruth Hardin

Lt. Jane E. Robertson
Diana Scott

Scott Sterling
Robin Bender Stevens

Dr. George Stroud
Etta Szeftel

Jacquelyn Thomas
Shealene Wasserman,
Esq.

Patricia Younce, Esq.

Executive Director– Beth Sturman

Senior Directors– Jenny Boyer and Tina Quinci

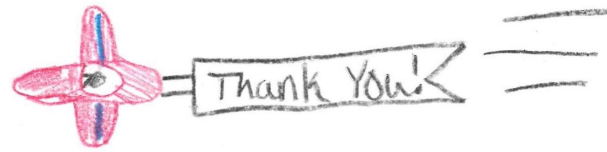
Counseling and Clinical Director– Minna Davis

Director of Fund Development– Betsy Kilkenny

Director of Community Outreach– Stacy Dougherty

The mission of Laurel House is to:

- Advocate for and empower those impacted by domestic violence by providing crisis intervention, safe haven, supportive programs and resources
- Advance social change through preventative education and through community training and collaboration to foster a coordinated response to domestic abuse



*“Thank y’all so very
much for all your
support. I don’t know if
I could have been so
strong to fight to break
free once and for all
without you.”-
A Laurel House client*

Laurel House
PO Box 764
Norristown, PA 19404
www.laurel-house.org
info@laurel-house.org
Office– 610.277.1860
Hotline– 1.800.642.3150



*Working to End
Domestic Violence*

Annual Report

Fiscal Year 16-17

*Laurel House is dedicated
to the vision of ending
domestic violence in each
life, home,
and community*



Dear Friends of Laurel House,

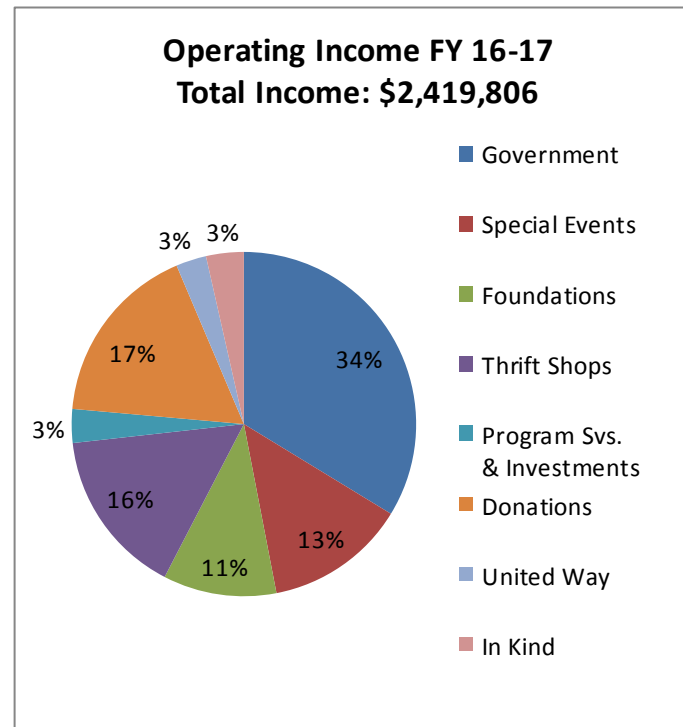
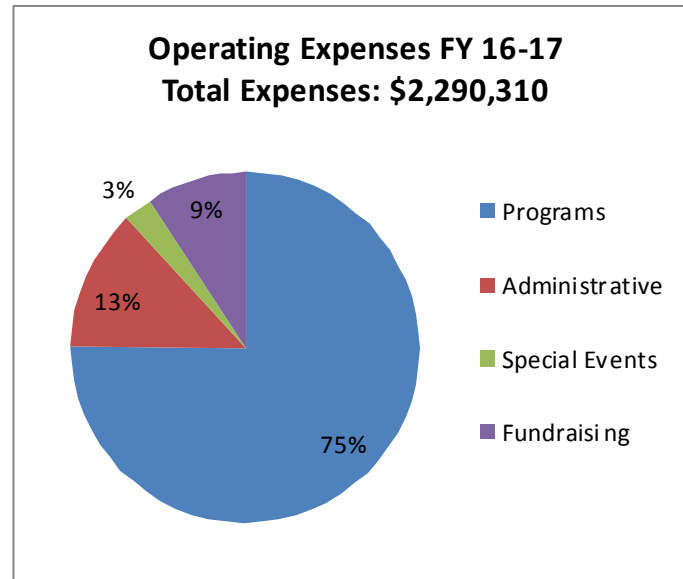
In the last ten years, more than 1,600 people have died in domestic violence related incidents in Pennsylvania (www.pcadv.org). Sadly, with this statistic, one can see why services are needed for domestic violence victims and their families. Laurel House provides this assistance on a daily basis. Over the past year, Laurel House has provided shelter, individual and group counseling, and legal services. Our 24/7 hotline has helped over one thousand people seeking support. Our staff and volunteers have provided numerous domestic violence trainings at local companies, schools and places of worship.

Laurel House staff members and Board of Directors will continue to evaluate services and needs so that we can provide care for victims of domestic violence. More importantly, as the leading comprehensive domestic violence agency in Montgomery County, we remain committed to continuing preventative education for our community and the surrounding areas.

We want to thank our Board of Directors, Staff and Volunteers for all of their hard work and their dedication to the Laurel House mission. We also want to thank everyone who has supported our thrift stores and fundraisers and provided in-kind donations throughout this past year. Laurel House would not be the premier organization it is without your support and love.

Sincerely,
Dr. Colleen Lelli Mary Griffith-Alfarano
Laurel House Board of Directors Co-Chairs

July 1, 2016-June 30, 2017 Financials



July 1, 2016-June 30, 2017

Service Statistics

- * Responded to 1782 hotline callers seeking shelter, support, resources and safety planning
- * Provided 5913 days of emergency shelter to 96 adults
- * Housed 92 children and provided 976 hours of therapeutic recreation while at the shelter
- * Provided 1435 hours of legal advocacy to shelter and community residents
- * Provided post-shelter rental subsidy and case management to 12 families
- * Provided 1241 hours of individual counseling to 278 survivors within the shelter and community
- * Provided 200 support group sessions throughout 4 different locations within the community
- * Provided crisis response to 398 victims when called by law enforcement or medical personnel and provided 3036 hours of on-going advocacy to these victims
- * Provided 259 programs to 6894 students in 24 schools spanning 14 school districts
- * Provided 37 trainings to professionals in the law enforcement, mental health, and medical fields